

DemoS references

Almost 80 machines in Europe, North, Central and South America, Middle East, Oceania and Far East.

Industries : Personal care, Sauce, Vegetable, Baby food, Dairy, Water, Juice, Soft drinks, Spirit, Wine, Champagne, Edible oil, Frozen Foods...

Containers : Ovoid plastic bottles, Gallons bottles, PET bottles, Pouches, Glass flasks, Glass bottles, Cartons, Cluster packs, Plastic cups...



14 machines for Procter & Gamble (worldwide, since 2015)

Our DemoS Collator are creating groupings of ovoid PET shampoo bottles. In front of Cermex and Ocme packers. Please note that some of the integrations have been made ON SITE as we replaced lane divider + infeed of packer. Some of these machines have been in production for 12 years now. Up to 24 000 bottles per hour.

COLLATOR



PET



2 machines for Heinz (Brazil, 2017)

Our DemoS Collators are creating groupings of ovoid PET sauce bottles to be packed into a Cermex tray-shrink packer or a Cermex wraparound case packer, at 17 500 bottles per hour.

COLLATOR



PET



Machine for **CG Roxane** (USA, 2017)

Our DemoS Collator prepares groupings of big PET bottle of water and replace the infeed of the Sidel-Cermex shrinkpacker, making it extremely compact. We also supplied the "turner converger" upstream our DemoS. At 12 600 bottles per hour.

COLLATOR



PET



Machine for **Daisy Brand** (USA, 2018)

Our DemoS Collator prepares rectangular PET pucks of pouches ready for handle application by Karlville, at 6 000 pucks per hour. Special trick invented by Femaag: auto balancing of infeed coming from 2 fillers.

COLLATOR



PET



Machine for **Martell Cognac / Pernod-Ricard** (France, 2018)

Our DemoS Collator is preparing groupings of very difficult glass bottles (reverse conical) with gaps for a partition insertion and groupings of cartons with bottles inside. It is then feeding an Ocme wraparound packer, at 18 500 bottles per hour.

COLLATOR



GLASS

BOARD

DemoS references



Machine for **Wine bottles DS Smith** (France, 2018)

Our DemoS Collator is preparing groupings of cylindrical glass bottles in front of a DS Smith pick and place case-packer at 14 400 bottles per hour.

COLLATOR



GLASS



Machine for **Moët Mercier Champagne** (France, 2018)

Our DemoS Collator is preparing groupings of cylindrical glass bottles AND cylindrical glass bottles in rectangular cartons with gaps for a partition insertion and make them available for a Sidel-Cermex pick and place case-packer at 15 000 bottles per hour and 10 000 cartons per hour.

COLLATOR



GLASS



BOARD



Machine for **United Spirits** (India, 2019)

Our DemoS Collator is preparing groupings of rectangular glass flasks and pitch them for a KHS shrink-wrapper at 30 000 bottles per hour.

COLLATOR



GLASS



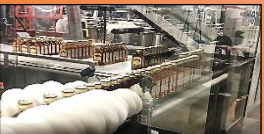
Machine for **Iceland Spring** (Iceland, 2019)

Our DemoS Divider is dividing square and round PET bottles to feed a KHS-KAYAT drop-case packer, at 12 000 bottles per hour.

DIVIDER



PET



Machine for **Alliance Spirit** (Russia, 2019)

Our DemoS Collator is creating groupings of 24 to 6 cylindrical glass bottles or rectangular flask of spirits, some with gaps for a partition's insertion, and then loaded into an Ocme wraparound packer, at 14 400 bottles per hour.

COLLATOR



GLASS



Machine for **Daucy** (France, 2019)

Our DemoS Rows Feeder is transferring cartons clusters of cylindrical tins at 90° and on 2 lanes in order to feed an ET Pack tray-packer, at 12 600 cartons clusters per hour.

ROWS FEEDER



CLUSTER PACK

DemoS references



Machine for **Cristaline** (France, 2019)

Our DemoS Collator is preparing groupings of 3-5L square PET bottles of water and make available for a palletizer, at 5 000 bottles per hour. Special trick : orientation of the bottles to put labels on exteriors sides of the pallet.

COLLATOR



PET



Machine for **Bashundhara Food** (Bangladesh, 2019)

Our DemoS Collator is preparing groupings of rectangular PET bottles of edible oil and make them available for a KHS pick and place case packer, at 20 000 bottles per hour.

COLLATOR



PET



Machine for **Refresco** (Germany, 2020)

Our DemoS Divider is dividing cylindrical and square PET bottles and make them available for a KHS shrink-wrapper, at 14 400 bottles per hour.

DIVIDER



PET



Machine for **Bledina** (Danone / France, 2020)

Our DemoS Layer is preparing complete layers (120x100) of baby-foods glass jars for bulk palletizing by Sidel-Cermex, at 58 000 jars per hour.

COLLATOR



GLASS



2 machines for **Mark Anthony Breweries** (USA, 2020 & 2022)

Our DemoS Rows Feeder are preparing layers of various fridge packs of beverage cans for a KHS pick and place packer, at 144 000 cans per hour.

ROWS FEEDER



CLUSTER PACK



Machine for **Aquamark** (France, 2020)

Just after a KHS NMP multipacker, our DemoS Rows Feeder is transferring groupings of cylindrical PET bottles (glue spot technology from KHS) and pitch them for a handle applicator, at 4 680 groupings per hour.

ROWS FEEDER



PET

DemoS references



Machine for **Rauch** (USA, 2021)

Our DemoS Rows Feeder is preparing layers of various fridge rectangular packs of beverage cans for a KHS pick and place packer, at 144 000 cans per hour.

ROWS FEEDER



CLUSTER PACK



Machine for **Brasserie Champigneulles** (France, 2021)

Our DemoS Divider is dividing and turning (if needed) rectangular clusters packs of beer bottles in front of a KHS tray shrink packer, at 72 000 bottles per hour.

DIVIDER



CLUSTER PACK



Machine for **Vittel-Contrex** (Nestlé Waters / France, 2021)

Our DemoS Collator is preparing groupings of cylindrical PET bottles in front of an Ocme shrink packer, at 22 500 bottles per hour.

COLLATOR



PET



Machine for **Bonduelle** (France, 2021)

Our DemoS Rows Feeder is feeding loose tins or shrink-wrapped packs of tins into an existing Prasmatic tray-packer. Featuring also a "by-pass" capacity with a tilting belt, at 25 200 tins per hour.

ROWS FEEDER & By-Pass



MET



Machine for **Cristaline** (France, 2021)

Our DemoS Divider is dividing, orientate and pitching big cylindrical and square PET bottles to feed a handle applicator, up to 8 280 bottles per hour.

ROWS FEEDER



PET



Machine for **Refresco** (France, 2021)

Our DemoS Divider is dividing and feeding an existing Acmi packer with loose cylindrical glass bottles and packs of 4 or 6 glass bottles, up to 25 000 bottles per hour.

DIVIDER



GLASS

CLUSTER PACK

DemoS references



Machine for **Motul** (France, 2021)

Our DemoS Collator is creating groupings of 1-2-4-5L rectangular plastic bottles of lubricant and deliver them to an Ocme shrink-packer, up to 10 500 bottles per hour.

COLLATOR



PET



Machine for **Cargill** (Brazil, 2021)

Our DemoS **Combiner** Collator is preparing groupings of rectangular edible oil bottles in front of a Sidel-Cermex wraparound packer at 34 500 bottles per hour.

COLLATOR



PET



Machine for **Ragasa** (Mexico, 2021)

In front of a Sidel-Cermex pick and place packer, our DemoS Collator is preparing groupings of rectangular PET edible oil bottles, at 33 600 bottles per hour. Special feature: continuous bottles 90° rotation at the DemoS infeed.

COLLATOR



PET



Machine for **Ragasa** (Mexico, 2021)

In front of a Sidel-Cermex shrink-packer, our DemoS Collator is preparing groupings of rectangular PET edible oil bottles, at 33 600 bottles per hour. Special feature: continuous bottles 90° rotation at the DemoS infeed.

COLLATOR



PET



Machine for **Procter & Gamble** (France, 2022)

Our DemoS Collator is supplying groupings of cylindrical plastic jars to a Sidel-Cermex shrink-wrapper and a wrap-around case packer (special feature-very compact), at 9 000 jars per hour. Also, the DemoS flow control is hybrid – proposing endless screws OR side belts.

COLLATOR



PET



Machine for **Castel** (France, 2022)

Our DemoS Collator replace the natural distribution infeed and is preparing groupings of cylindrical wine glass bottles in front an existing ATECMI pick and place packer at 18 000 bottles per hour.

COLLATOR



GLASS

DemoS references



Machine for **Aquamark** (France, 2022)

Just after a KHS NMP multipacker, our DemoS Rows Feeder is transferring groupings of cylindrical PET bottles (glue spot technology from KHS) and pitch them for a handle applicator at 4 800 groupings per hour and on 2 lanes.

ROWS FEEDER



PET



Machine for **Vittel-Hépar** (Nestlé Waters / France, 2022)

In front of an existing OCME shrink packer, our DemoS Rows Feeder is preparing groupings of square PET bottles, at 22 500 bottles per hour.

COLLATOR



PET



Machine for **PDP Fine Foods** (Australia, 2022)

In front of a Spiral Chiller, our DemoS Rows Feeder is feeding rows of cylindrical PET dessert cups, at 13 000 cups per hour.

ROWS FEEDER



PET



Machine for **Remy Martin** (France, 2023)

In front of a DS SMITH EVA pick and place packer, our Demos Collator is preparing groupings of inverted conical glass bottles of spirit, at 16 800 bottles per hour.

COLLATOR



GLASS



Machine for **Cogevi** (France, 2023)

In front of SEDAM-VALENTIN robot, our DemoS Layer is preparing sequences of rows of cylindrical champagne glass bottles. To be rotated horizontally and loaded into metal wire pallet boxes, at 15 000 bottles per hour.

LAYER



GLASS



Machine for **Ouest-Consigne / Bout à Bout** (France, 2023)

In front of a TRANSPAK Robotic bulk palletizer, our DemoS Layer is preparing complete layers of empty reused cylindrical glass bottles (after washing), at 9 600 bottles per hour.

LAYER



GLASS

DemoS references



Machine for **First Choice Beverage** (Canada, 2023)

In front of a KHS Tray + film packer, our DemoS **Combiner** Divider is feeding the infeed conveyor with cylindrical, square and rectangular PET bottles of juice, up to 45 000 bottles per hour.

DIVIDER



PET



Machine for **Melubco** (United Arab Emirates, 2023)

In front of an Ocme wrap-around packer, our DemoS Collator is creating groupings of rectangular plastic bottles of lubricant at 8 000 bottles per hour.

COLLATOR



PET



Machine for **Procter & Gamble Urlati** (Romania, 2023)

In front of a Sidel/Cermex shrinkpacker, our DemoS **Combiner** Collator is preparing groupings of ovoid shampoo PET bottles, at 19 800 bottles per hour. Special feature: first DemoS **180°** allowing an in-line unifilar feeding instead of 90°.

COLLATOR



PET



Machine for **CEDC International SP ZOO** (Poland, 2023)

In front of a KHS wrap-around packer, our DemoS **Combiner** Collator prepare groupings of cylindrical and rectangular spirits glass bottles, at 28 800 bottles per hour.

COLLATOR



GLASS



Machine for **San Benedetto** (Italia, 2023)

In front of an Acmi tray and film packer, our DemoS Divider feeds lanes of loose cylindrical glass bottles and cluster packs of tonic water, at 48 000 bottles per hour.

DIVIDER



GLASS

PACK



Machine for **Proteinas y Oleicos** (Mexico, 2024)

Our DemoS Collator is preparing groupings of cylindrical and rectangular PET bottles of edible oil in front of an Ocme wraparound packer, at 21 600 bottles per hour.

COLLATOR



PET

DemoS references



Machine for **Kellanova Mechelen** (Belgium, 2024)

Our DemoS **Combiner** Collator is creating groupings of cylindrical cardboard boxes to feed a KRONES wraparound packer, up to 43 200 boxes per hour. Special feature: 90° belt for 180° configuration.

COLLATOR



CARDBOARD



Machine for **Kellanova Kutno** (Poland, 2024)

Our DemoS **Combiner** Collator is creating groupings of cylindrical cardboard boxes to feed a KRONES wraparound packer, up to 25 200 boxes per hour.

COLLATOR



CARDBOARD



Machine for **Kellanova Kutno** (Poland, 2024)

Our DemoS **Combiner** Collator is creating groupings of cylindrical cardboard boxes to feed a KRONES wraparound packer, up to 24 700 boxes per hour.

COLLATOR



CARDBOARD



Machine for **Kellanova Kutno** (Poland, 2024)

Our DemoS **Combiner** Collator is creating groupings of cylindrical cardboard boxes to feed a KRONES wraparound packer, up to 24 700 boxes per hour.

COLLATOR



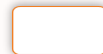
CARDBOARD



Machine for **Boiron Frères** (France, 2025)

In front of an ETPACK pick and place packer, our DemoS Collator is collating rectangular PET trays of frozen fruits, at 6000 trays per hour.

COLLATOR



PET



Machine for **Vilsa** (Germany, 2025)

After a KHS NMP packer our DemoS Divider is setting the glued packs of PET bottles on 2 lanes and long side leading, feeding then an existing packer. Up to 7200 bottles per hour. Special feature : **By-Pass**

DIVIDER



PET

DemoS references

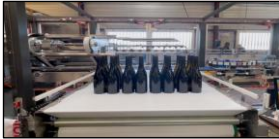


Machine for **Industrias Vinicolas Pedro Domecq** (Mexico, 2024)
Our DemoS Collator is creating collations of cylindrical and rectangular spirits glass bottles to feed an Ocme wraparound packer, up to 15 000 bottles per hour.

COLLATOR



GLASS



Machine for **Vignerons Ardéchois** (France, 2024)
Our DemoS Collator is creating collations of cylindrical glass wine bottles in front of a DS Smith EVA pick and place packer, at 10 000 bottles per hour.

COLLATOR



GLASS

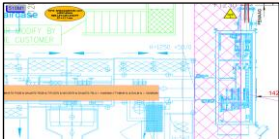


Machine for **G.H. Martell** (France, 2024)
Our DemoS Collator is preparing collations of cylindrical glass champagne bottles in front of a DS Smith EVA pick and place packer, at 8000 bottles per hour.

COLLATOR



GLASS



Machine for **Whyte and Mackay** (Scotland, 2024)
Our DemoS Collator is preparing collations of cylindrical spirits glass bottles and of rectangular cartons with bottle inside, to feed an Ocme wraparound packer, up to 12 000 containers per hour.

COLLATOR



GLASS

CARDBOARD



Machine for **Cargill Château Gontier** (France, 2025)
Our DemoS Layer is preparing nested layers of cylindrical PET edible oil bottles in front of a Sidel robot palettizer, at 25 200 bottles per hour.

LAYER



PET



Machine for **Proteinas y Oleicos** (Mexico, 2025)
Our DemoS Rows Feeder prepare rows of cylindrical, rectangular and ovoid PET bottles of edible oil to feed an And & Or wrap around, up to 22 800 bottles per hour.

ROWS FEEDER



PET

DemoS references



Machine for **Cargill Izegem** (Belgium, 2024)

Our DemoS Divider is feeding corridors with cylindrical and rectangular PET bottles of edible oil, in front of an existing ItalProject pick and place half tray palletizer, at 28 800 bottles per hour.

DIVIDER



PET



Machine for **Cargill Izegem** (Belgium, 2024)

Our DemoS **Combiner** Collator prepare groupings of cylindrical and rectangular big PET bottles of edible oil in front of an OCME wraparound packer, up to 28 800 bottles per hour.

COLLATOR



PET



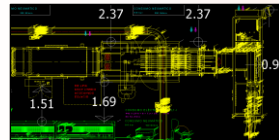
Machine for **Nestle Beverage Waverly** (USA, 2025)

Our DemoS Collator is creating groupings of cylindrical PET pots of chocolate or powdered milk, in front of an OCME skrink-packer, at 16 920 pots per hour.

COLLATOR



PET



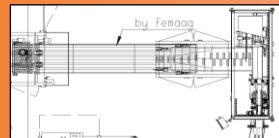
Machine for **Proteinas y Oleicos** (Mexico, 2025)

Our DemoS Rows Feeder prepare rows of cylindrical, rectangular and ovoid PET bottles of edible oil to feed an And & Or shripacker, at 22 800 bottles per hour.

ROWS FEEDER



PET



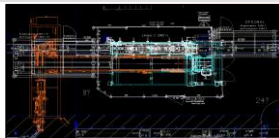
Machine for **Cargill Izegem** (Belgium, 2025)

Our DemoS Collator is preparing collations of cylindrical and rectangular big PET bottles of edible oil, to feed an Ocme wraparound packer, up to 8250 bottles per hour.

COLLATOR



PET



Machine for **Mission Hills (Colgate Palmolive)** (Mexico, 2025)

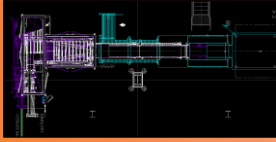
Our DemoS Collator is preparing collations of ovoid containers of fabric softener for a Krones pick and place packer, up to 25200 containers per hour.

COLLATOR



PET

DemoS references



Machine for **Nestlé** (Vietnam, 2025)

Our DemoS **Combiner** Collator is creating groupings of square and ovoid glass pots of Nescafe in front of a KHS wraparound packer, up to XXX containers per hour.

COLLATOR



GLASS